

# Grandstream Networks, Inc.

---

GVC320x

IP Multimedia Phone for Android™

## **GUI Customization Guide**



## Table of Contents

<b>INTRODUCTION</b> .....	<b>4</b>
<b>GVC3200/GVC3202 LCD GUI CUSTOMIZATION STEPS</b> .....	<b>5</b>
HTTPD SERVICE.....	5
<b>CONFIGURATION GUIDE</b> .....	<b>6</b>
App Settings .....	6
<i>Add 3<sup>rd</sup> Party Applications</i> .....	7
Config Settings .....	8
Contacts Settings .....	9
System settings .....	10
Peripheral Settings .....	11



## Table of figures

Figure 1: HTTPD Service .....	5
Figure 2: App Settings Page .....	6
Figure 3: Add 3 <sup>rd</sup> Party Application Settings.....	7
Figure 4: Config Settings Page .....	8
Figure 5: Contacts Settings Page .....	9
Figure 6: System Settings Page .....	10
Figure 7: Peripheral Settings Page .....	11



## INTRODUCTION

Grandstream GVC320x IP Video conferencing system allows users to customize the GUI desktop layout as well as GUI configurations on the phone, offering users with flexibility and control. The GUI configuration includes display/hide certain applications, configure parameters on the phone with specific configuration items, and enable/disable some applications and much more.

This document describes how to use the Grandstream Graphical GUI Customization Tool to customize the GVC3200/GVC3202 GUI settings and applications. This tool allows users to do the following on applications running on GVC3200/GVC3202:

- Turn on/off applications
- Set up parameters
- Personalize phone display
- Turn on/off certain functions on applications

The Grandstream Graphical GUI Customization Tool is available for download from the following link:

<http://www.grandstream.com/support/tools>



## GVC3200/GVC3202 LCD GUI CUSTOMIZATION STEPS

1. Unzip the tool package. Double click on “gui\_config\_tool.exe” to start up the tool. Single click on GVC3200/GVC3202 picture to get into the GVC3200/GVC3202 GUI customization interface.
2. Set up the parameters and application configurations.
3. Generate the GVC3200/GVC3202 custom file “GVC3200/GVC3202cust” by clicking on “File” → “Save As”. The tool also allows users to read and edit the existing custom files.
4. Put the generated custom file “GVC3200/GVC3202cust” on your HTTP/TFTP/HTTPS server.
5. Point the device's configuration file path to the directory on the server where the custom file locates.
6. Reboot the phone to trigger the upgrade.
7. After booting up, GVC3200/GVC3202 LCD shall display the customized GUI.

### HTTPD SERVICE

The GUI Customization Tool has a built-in HTTPD server which provides users the convenience to provision the GVC3200/GVC3202 without having to install a dedicated provisioning server. After generating a custom file “gvc3200cust” on the local PC, click on the “Server → Open HTTPD” option or the HTTPD icon to enable HTTPD service. A pop-out window showing the HTTP server address and port will be displayed. Users need to enter the HTTP server address and port on the GVC3200/GVC3202, and reboot the device to provision GVC3200/GVC3202.

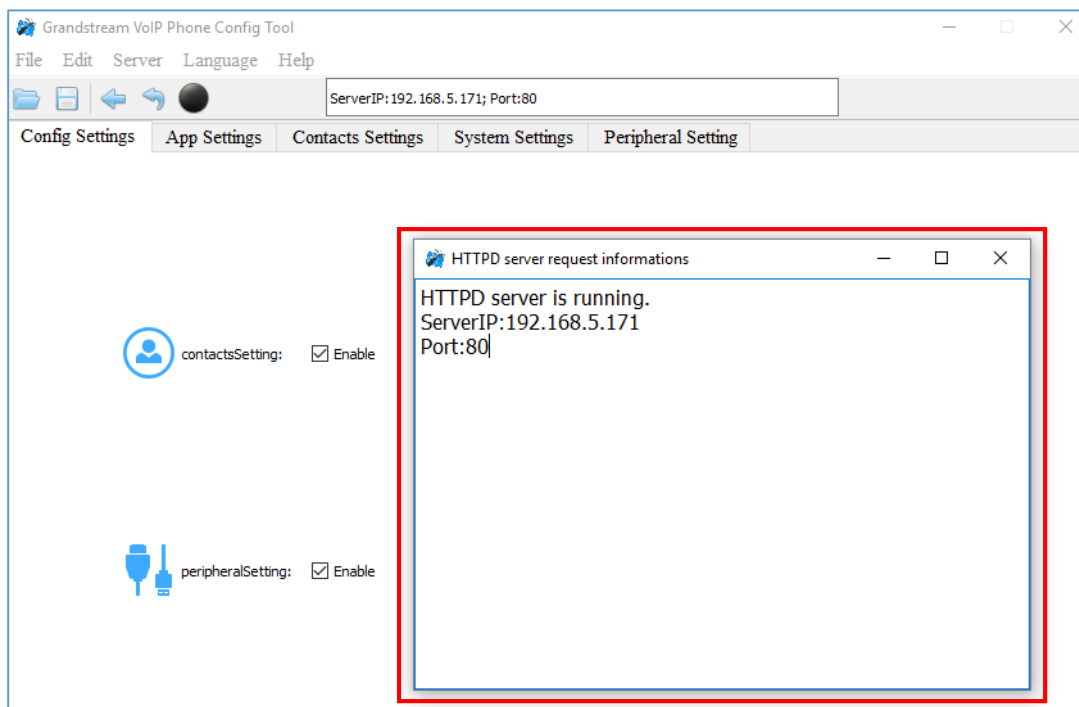


Figure 1: HTTPD Service



# CONFIGURATION GUIDE

## App Settings

Under the GVC3200/GVC3202 VoIP Phone Config tool interface → App Settings, the user has the ability to manage and customize everything about applications pre-installed on the GVC3200/GVC3202. *Refer to the following figure.*

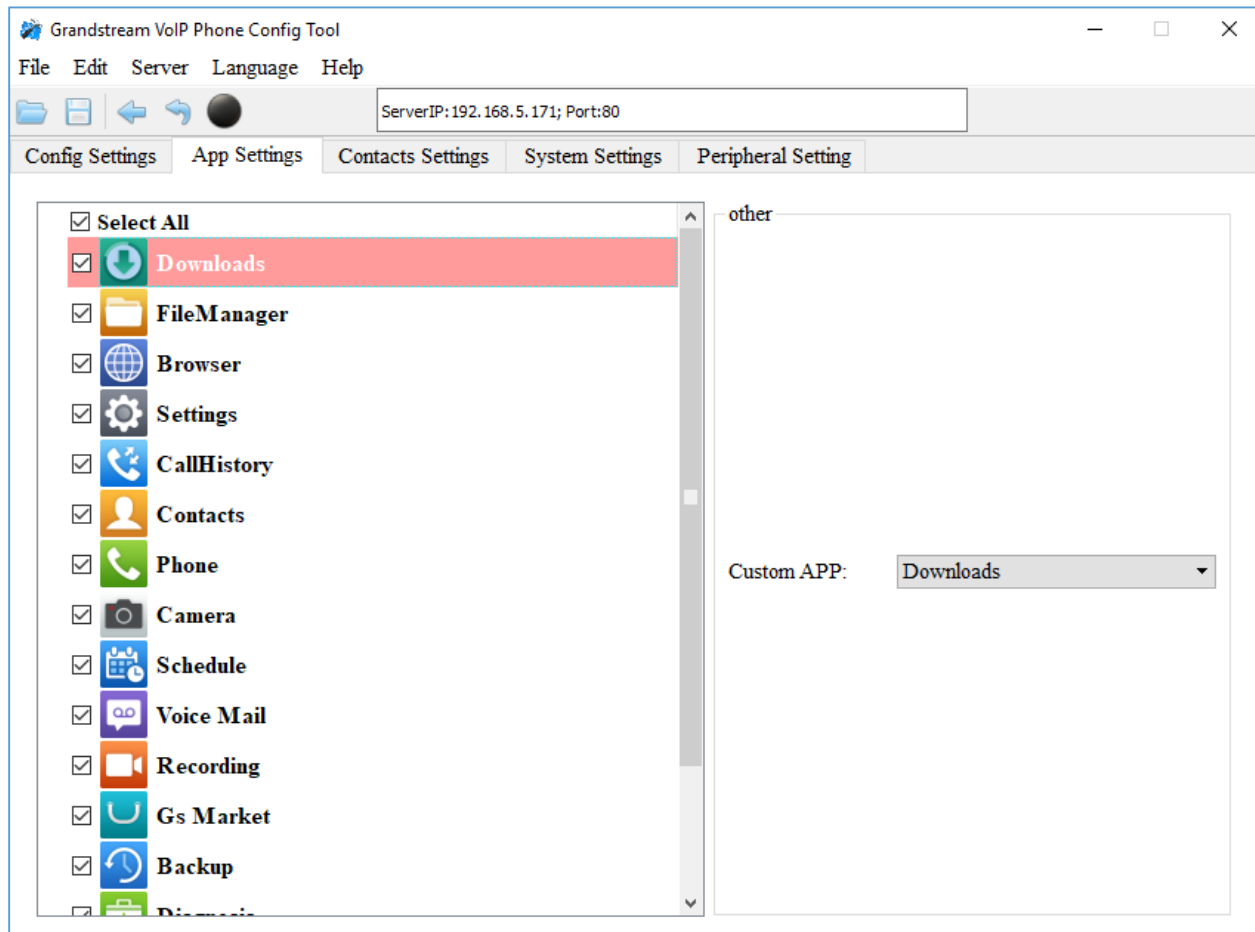


Figure 2: App Settings Page

In this section, users could configure the following:

- Edit menu layout structure
- Enable or disable specific application
- Edit options to be displayed on GUI interface for a specific application, which includes icon and text for description purpose (Default settings will be applied if there is no change made)



## Add 3<sup>rd</sup> Party Applications

To add a 3<sup>rd</sup> party application, with the cursor located within the left panel, right-click the mouse, a drop-down menu will appear, with the option “add3rdApp”.

Click on “add3rdApp”, a pop-up window “Add Third Party Application” will be shown. See *the following figure*. Browse and select an “icon” and an “apk”, enter a “Display Name”, and click on “Add”.

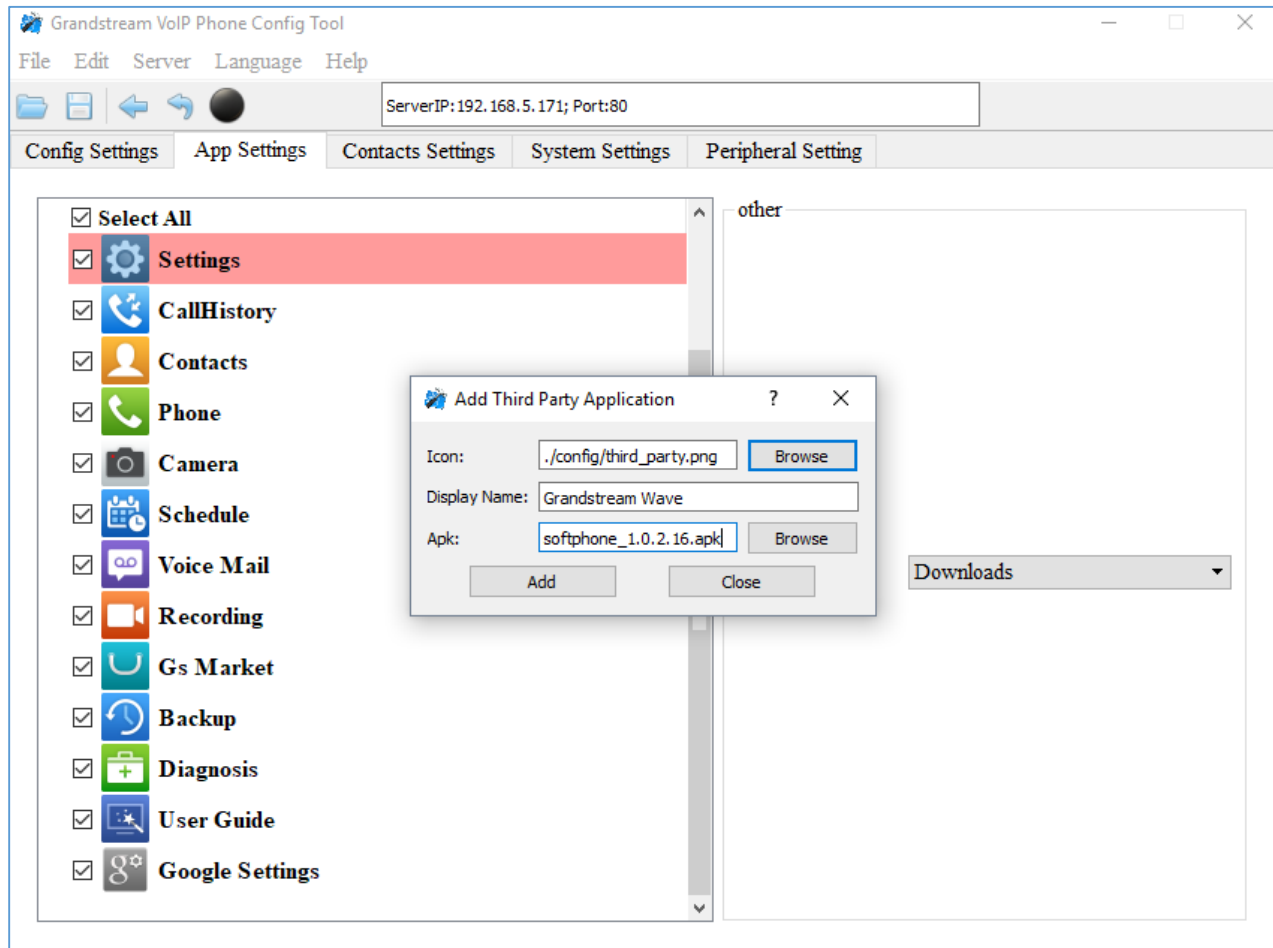


Figure 3: Add 3<sup>rd</sup> Party Application Settings

A third-party application with the icon and display name shows up in the left panel.



## Config Settings

The following figure shows the "Config Setting" section on the Customization Tool. Users could enable/disable the configuration options in Customization Tool. For example, if a user unchecks "System Settings" option, the "System Settings" option will be blocked, the user cannot browse the settings in "System Settings" in Customization tool.

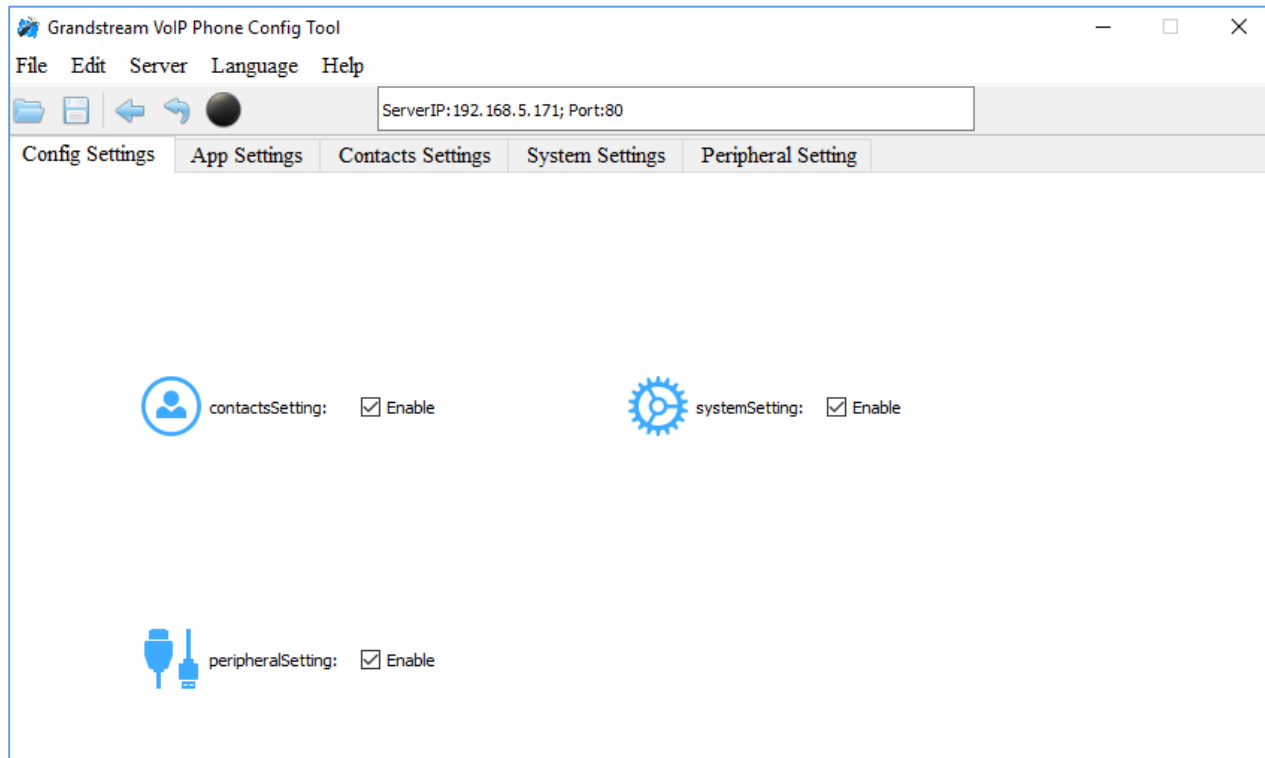


Figure 4: Config Settings Page





## Contacts Settings

The following figure shows the "Contacts Settings" section in the Customization Tool. In this section, parameters for phonebook download such as Download Mode, URL and Update-Interval can be set up for the GVC3200/GVC3202, as well as contacts Import/Export parameters.

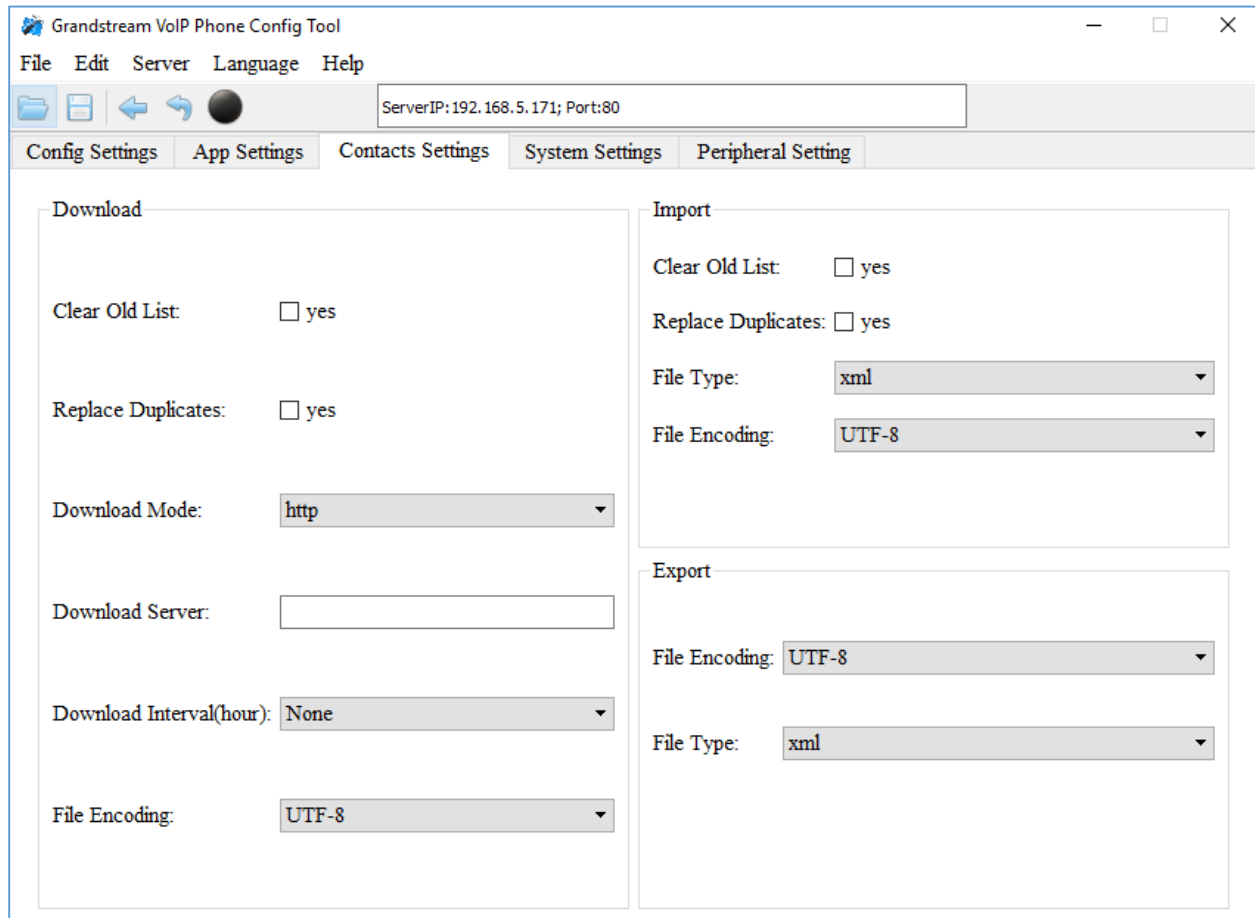


Figure 5: Contacts Settings Page



## System settings

The following figure shows the "System Setting" section in the Customization Tool. Users could configure the system related parameters in this section. For example, the language input, power mode, and other displaying parameters such as transparency.

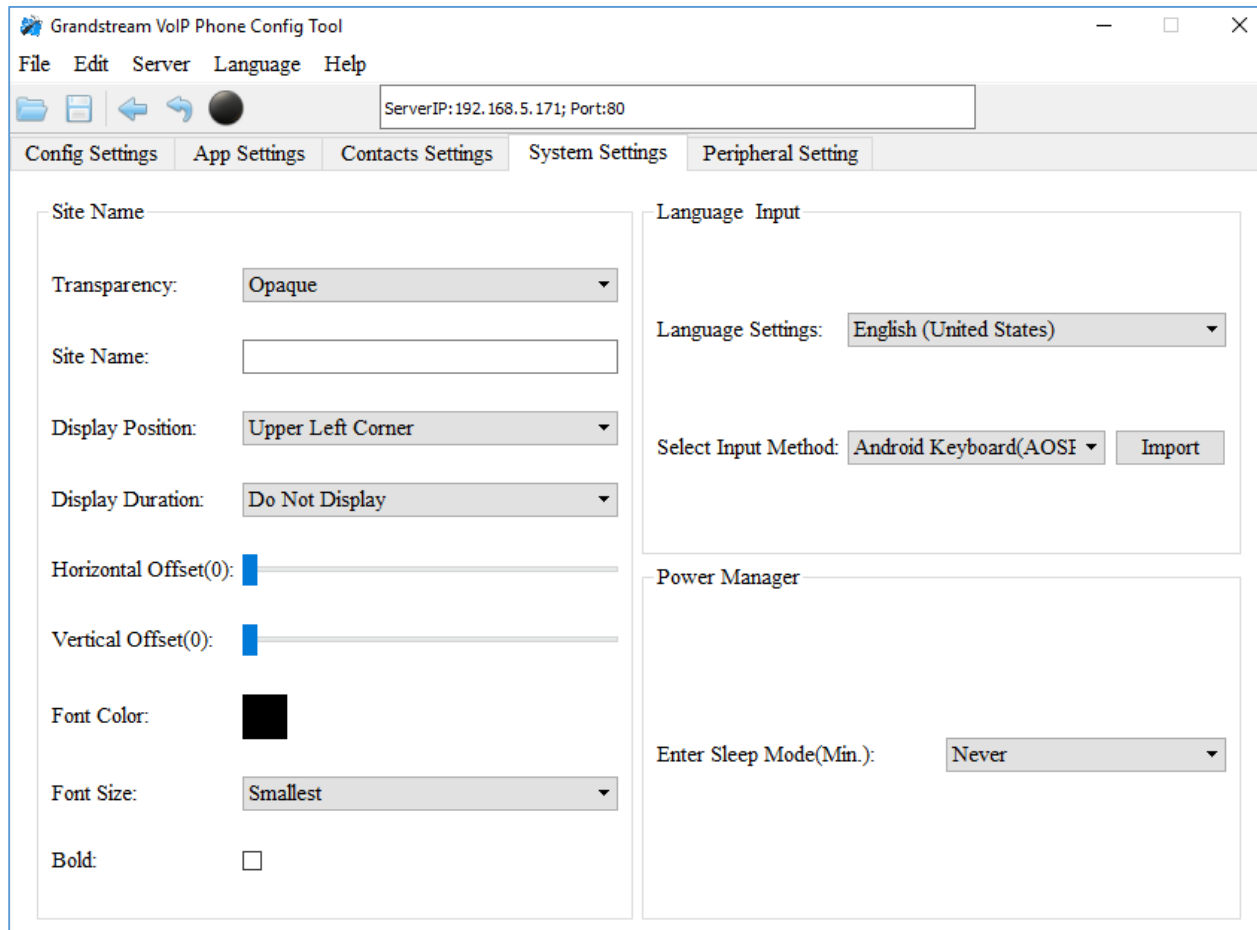


Figure 6: System Settings Page



## Peripheral Settings

The following figure shows the "Peripheral Settings" section in the Customization Tool. Users could configure the camera moving speed, HDMI parameters, VGA In, and enable/disable some of the device Manager's operations.

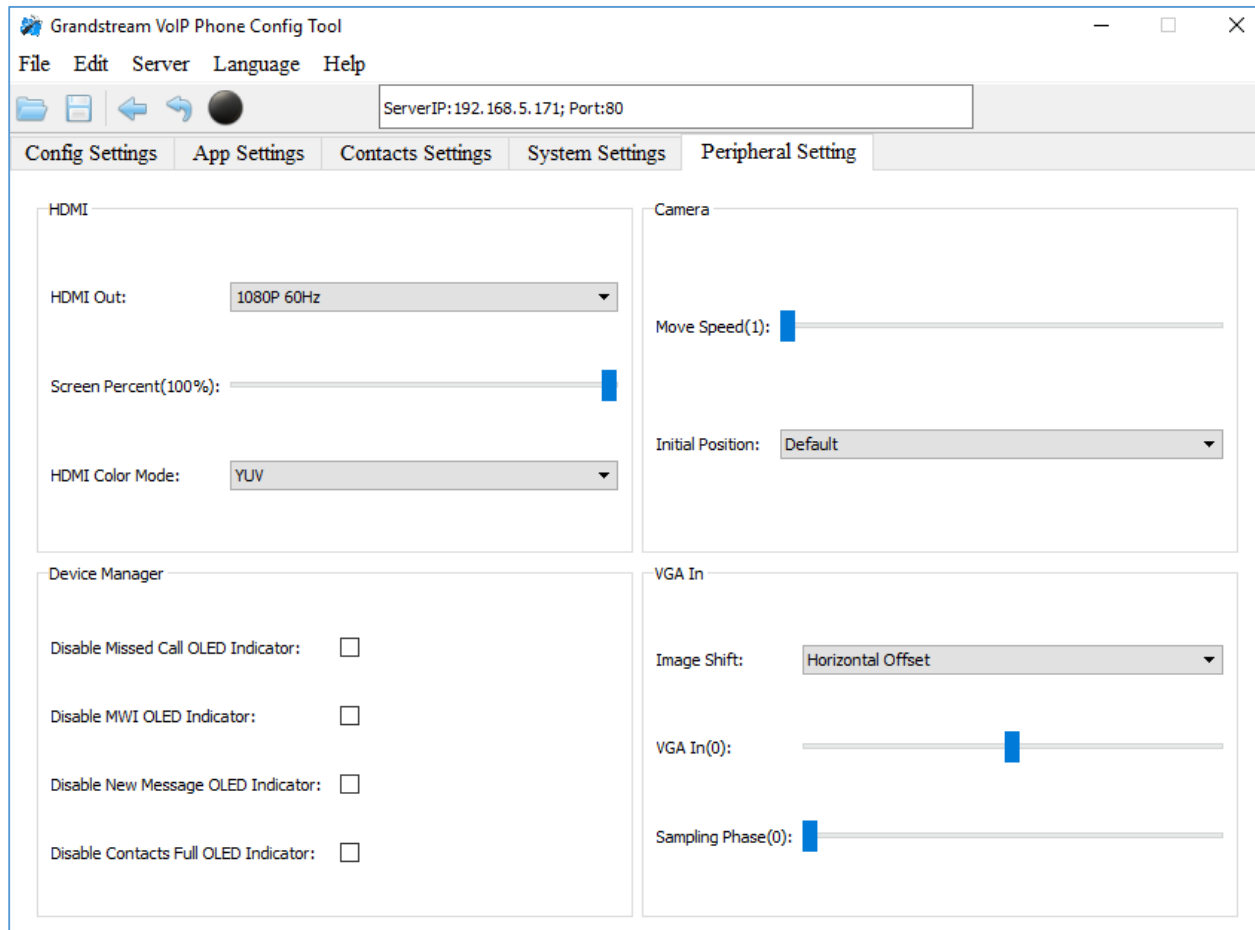


Figure 7: Peripheral Settings Page

